

COMMUNITIES UNITED, INC.

CREATIVE START CHILDREN'S CENTERS



2018-2019 AGENCY SELF-ASSESSMENT

Ensuring the Success of the Child, Empowering the Family, and Strengthening the Community.

Newton Creative Start

573-B Washington St.
Newton, MA 02458
617.527.6689

Waltham Creative Start

169 Elm St.
Waltham, MA 02453
781.647.0542

Woburn Creative Start

470 Wildwood Ave.
Woburn, MA 01801
781.932.9578



MISSION

Communities United Inc. is a community based private nonprofit organization that continually strives to provide high quality comprehensive education and family services to a diverse population of children, ages 0-5 years, and their families.

HISTORY

In 1970, a group of concerned parents, town officials and community volunteers formed Communities United, Inc., then a pilot program supported solely by Head Start funding with the purpose of providing comprehensive services in education, social services, health and parenting. At that time, CUI served a preschool population of 3-5 year olds for half-days in five communities. By 1980, the staff had grown to 50 and the program served 180 children.

Over the next ten years, the number of staff and children served doubled. The need for full-day childcare became a growing issue, and by 1995 CUI becomes a lead agency for state-funded Community Partnership Grants (CPG). CPG provided tuition subsidies enabling families to afford full day care for their children. Today, the agency's 80 employees serve approximately 350 children, of infant, toddler and preschool age, from eleven unique suburban communities along the Rte. 128 belt. These communities are Arlington, Belmont, Brookline, Burlington, Lexington, Needham, Newton, Waltham, Watertown, Wellesley and Woburn.



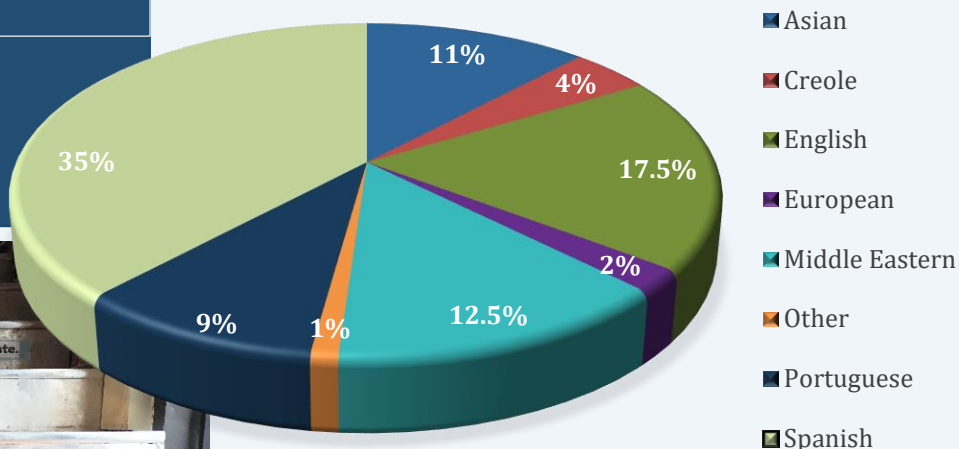
*Ensuring the Success of the Child,
Empowering the Family,
and Strengthening the Community.*

CUI's NEW 5 YEAR GRANT CYCLE BEGAN FEBRUARY 1, 2019

As part of the new grant cycle, CUI created 4 new program goals that support the agencies mission to serve children, families and the community.



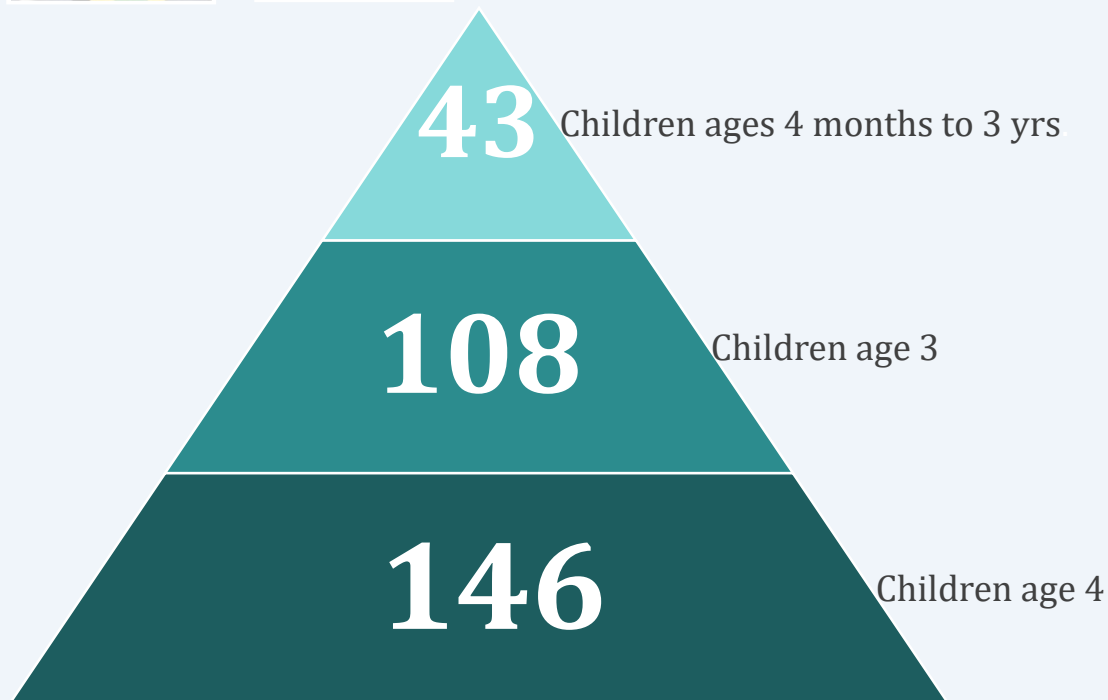
PRIMARY LANGUAGES OF FAMILIES SERVED



All our centers welcome and respect each family's home language and culture. CUI is privileged to have a diverse population of families who speak languages that are shown in the graph above.

CUI consistently supports each family's home language while encouraging the acquisition of English in the classroom with teachers who speak the home language of many of our families.

ENROLLMENT OF CHILDREN BY AGE



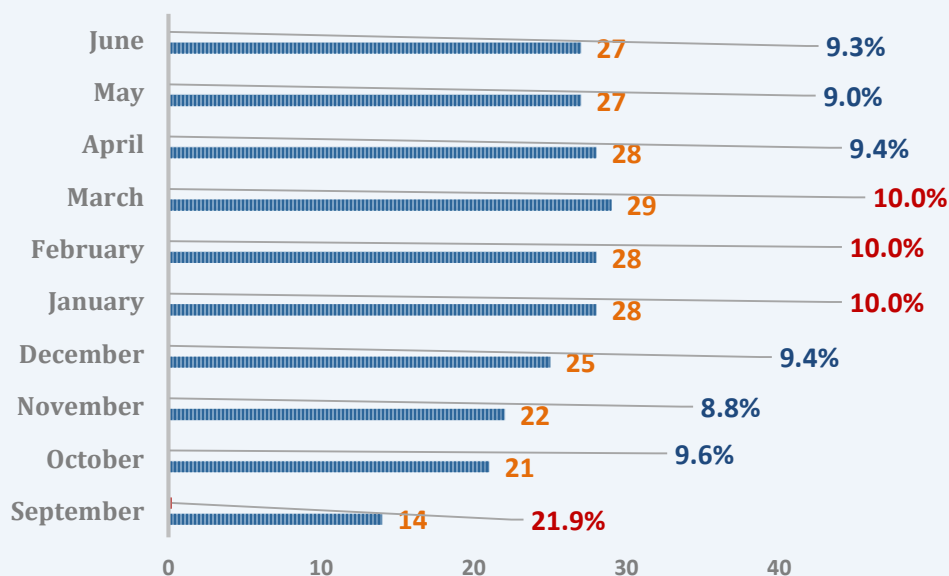
CUI serves children ages 4 months to 5 years-**Enrollment of children** by age is represented here.

CUI ensures the individualized needs of children with disabilities, including but not limited to those eligible for services under Individuals with Disabilities Education Act (IDEA), are being met and all children have access to and can fully participate in the full range of activities and services.

10%

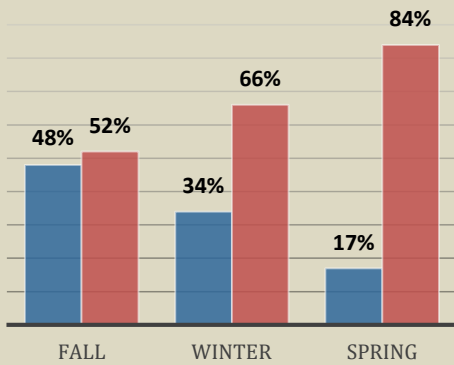
Federal law says that each Head Start program must reserve at least **10%** of their enrollment for children with disabilities. In order for children to get special education services from CUI, children must be eligible based on the federal law called **(IDEA)**

CHILDREN ENROLLED WITH AN INDIVIDUAL EDUCATION PLAN (IEP) OR INDIVIDUAL FAMILY SERVICE PLAN (IFSP)

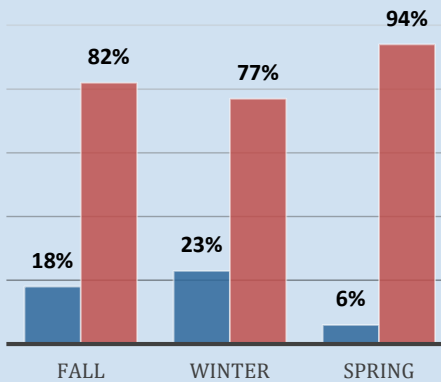


PRESCHOOL AGE (3 YRS.) CHILD OUTCOMES

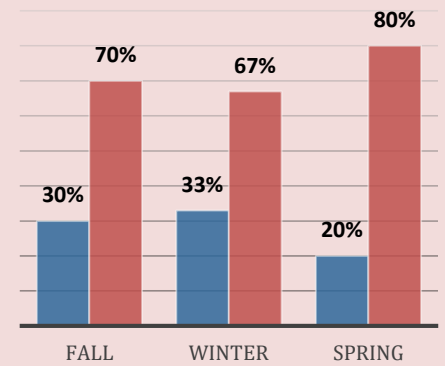
Social Emotional Domain



Gross & Fine Motor Domain



Language Domain

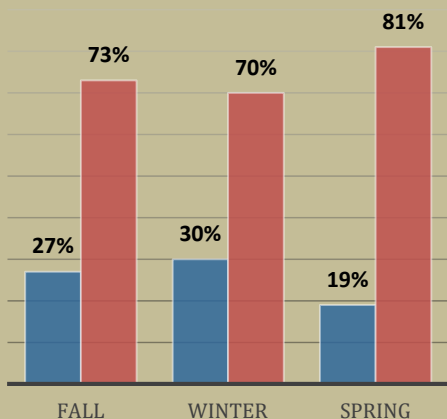


Program Goal-1

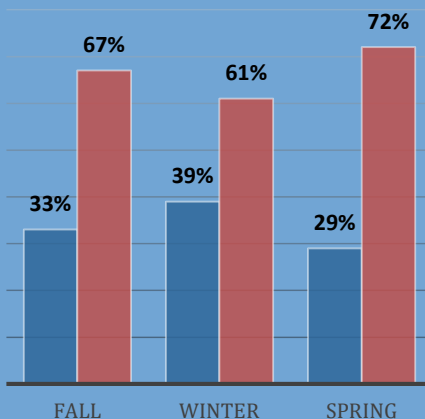
Children will demonstrate age appropriate progress across domains of: Language, Communication and Literacy with a focus on their home language that will support their readiness for kindergarten.

Progress: CUI educators used the Mass. Early Learning Curriculum with their Preschoolers and The Creative Curriculum with their Infants and Toddlers as well as the Head Start Early Learning Outcomes Framework (HSELOF) to provide language rich environments that support children attending to communication and language from others.

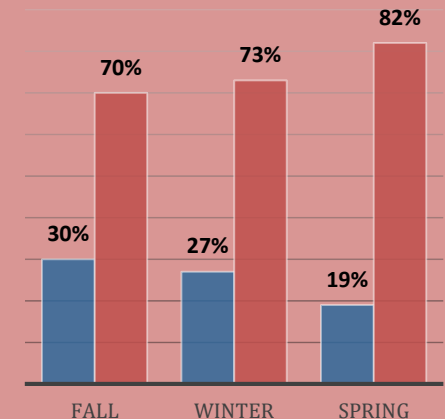
Cognitive Domain



Literacy Domain



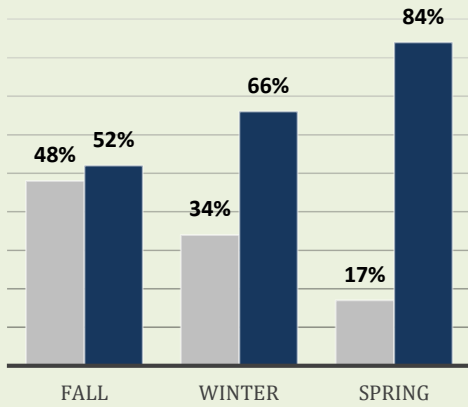
Math Domain



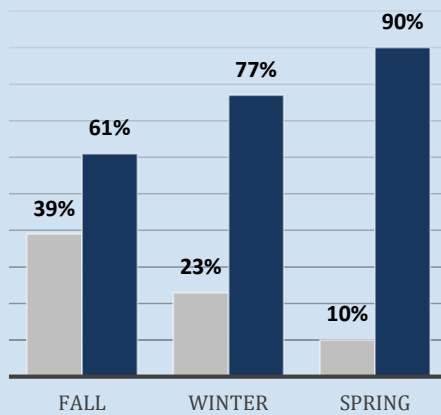
Key: ■ Below Expectations ■ Meets/Exceeds Expectations

PRESCHOOL AGE (4 YRS.) CHILD OUTCOMES

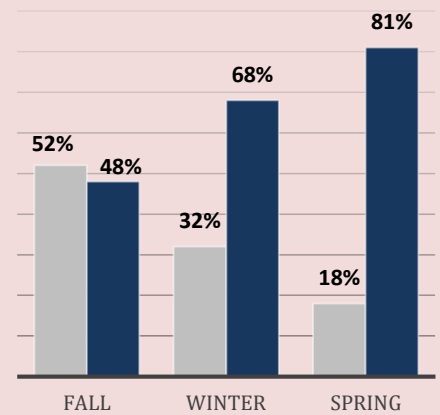
Social Emotional Domain



Gross & Fine Motor Domain



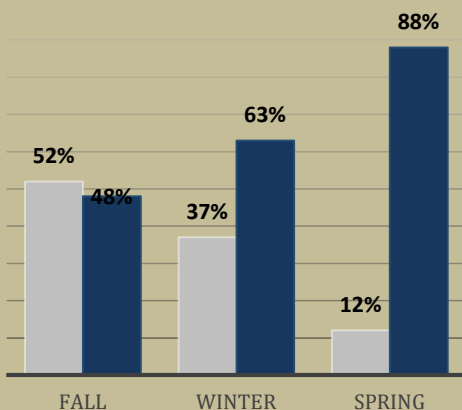
Language Domain



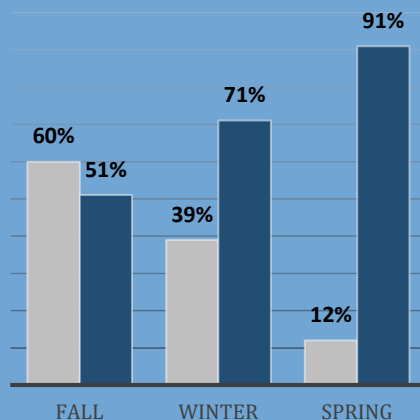
CUI strives to provide developmentally appropriate programming in the five areas of readiness: Health and Physical Development (Fine and Gross Motor); Social and Emotional Development; Approaches to Learning; Language and Literacy Development; and Cognition and Knowledge.

CUI establishes school readiness goals each year after reviewing the outcomes data in an effort to improve readiness for Kindergarten.

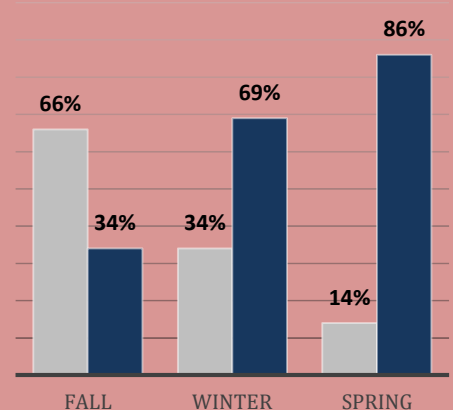
Cognitive Domain



Literacy Domain



Math Domain



Key: ■ Below Expectations ■ Meets/Exceeds Expectations

Program Goal-2

Program Goal 2 – CUI will collaborate with families and community partners to develop supportive networks that promote positive caregiver/child interactions, increase parent participation in parent meetings, trainings and policy council meetings, so parents are empowered as advocates, leaders and their child's first teacher.

Positive & Goal-Oriented Relationships

Equity, Inclusiveness, Cultural and Linguistic Responsiveness

PROGRAM FOUNDATIONS	PROGRAM IMPACT AREAS	FAMILY OUTCOMES	CHILD OUTCOMES
Program Leadership Professional Development Continuous Learning and Quality Improvement	Program Environment Family Partnerships Teaching and Learning Community Partnerships Access and Continuity	Family Well-being Positive Parent-Child Relationships Families as Lifelong Educators Families as Learners Family Engagement in Transitions Family Connections to Peers and Community Families as Advocates and Leaders	Children are: Safe Healthy and well Learning and developing Engaged in positive relationships with family members, caregivers, and other children Ready for school Successful in school and life

Family engagement is an interactive process through which program staff and families, family members, and their children build positive and goal-oriented relationships. It is a shared responsibility of families and professionals that requires mutual respect for the roles and strengths each has to offer. Family engagement means doing with—not doing to or for—families.

FAMILY CONNECTIONS TO PEERS & COMMUNITY

FAMILY ENGAGEMENT ACTIVITIES



The graph represents the number of ways families engaged in their child's education during the school year.

Progress:

- CUI held monthly family events that provided families the opportunity to meet other families, community partners and participate in educational activities with their children.
- Parent meetings were held monthly as well at each program and provided families the opportunity to share ideas for curriculum, fundraising, family events, special activities, fieldtrips, etc.
- CUI offered a 6 week parenting curriculum at each of our sites as well as a trial 10 week parenting program at our Waltham school that focused on empowering families in their role as an advocate and leader.
- Each program also offered parents an opportunity to go into the State House for advocacy day and each program also invited Legislator's into our schools this past Spring. Parents shared their personal stories and advocated for continued funding of high quality early childhood programs like CUI offers.

MEDICAL AND DENTAL HOME

CUI's Early Head Start & Head Start programs provide education and health services in the context of Family & Community. CUI Staff build relationships with oral & medical health providers in the communities we serve to best support our children & families.



be YOU tiful



99%

Of children served in 2018-19 year have a Medical Home at beginning and end of enrollment

97%

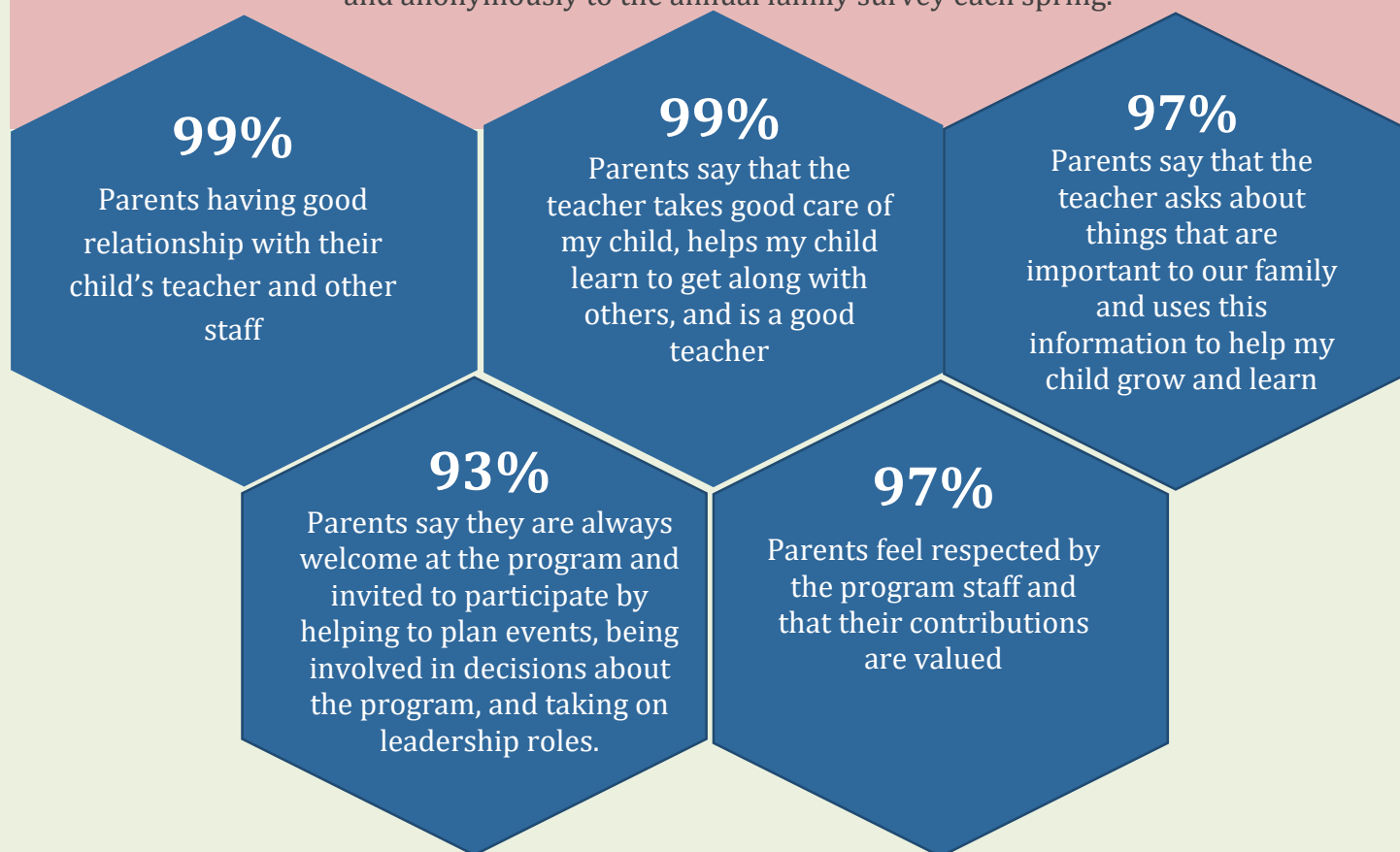
Of children served in 2018-19 year have a Dental Home at beginning and end of enrollment

Head Start and Early Head Start health services focus on prevention and early intervention and are based on the premise that a child must be healthy in order to be ready to learn.

Good oral health for infants, toddlers and pre-school children is essential for a child's behavioral, speech, language and overall growth and development.

CONTINUOUS PROGRAM IMPROVEMENT

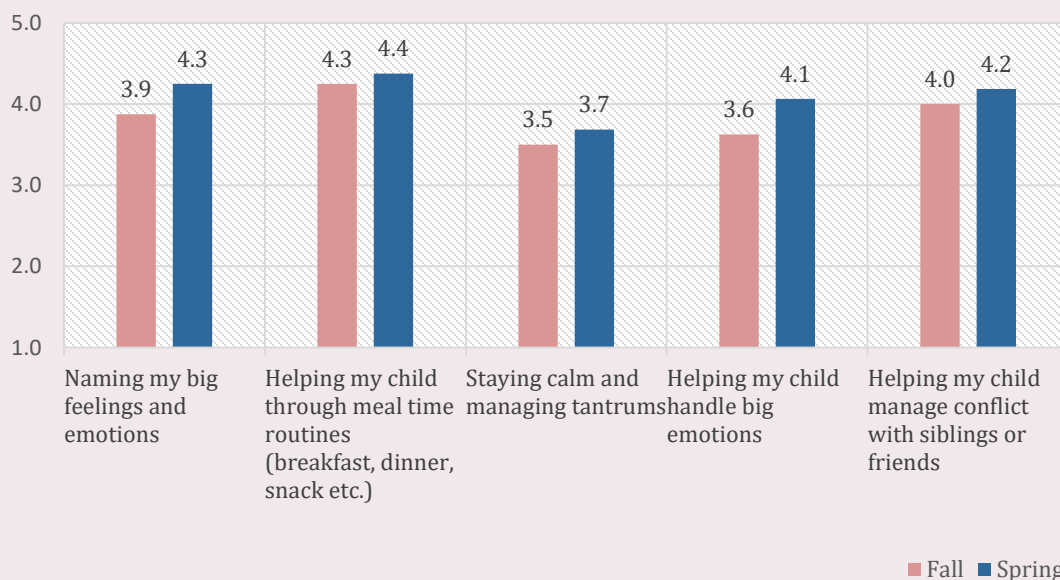
Family perspectives are essential to Communities United, Inc. self-assessment and program improvement process. CUI provides all enrolled families the opportunity to respond confidentially and anonymously to the annual family survey each spring.



Above survey data collected from 86% of the families agency-wide.

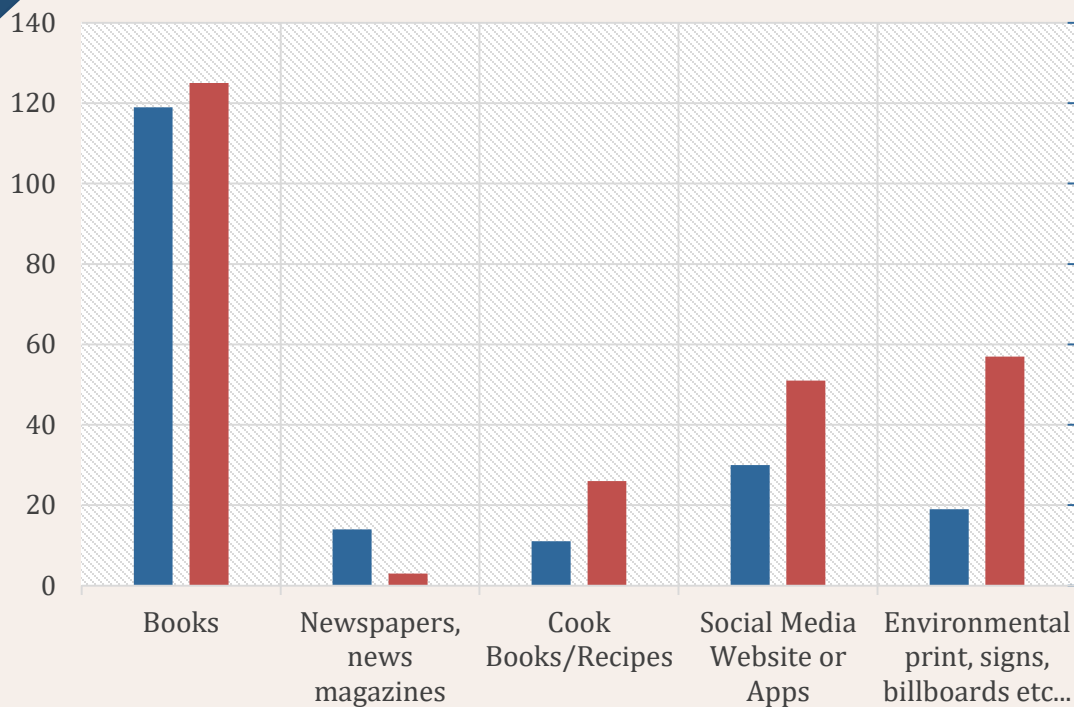
FAMILIES
AS
LEARNERS

PARENTING SOLUTIONS SURVEY RESULTS



CUI implemented the *Center of Social and Emotional Foundations of Early Learning (CSEFEL)* Parenting Solutions Curriculum for the first time during the 2018-2019 school year. The program is a research-based parenting curriculum that builds on parents' knowledge and offers parents the opportunity to practice parenting skills to promote children's learning and development. Parents at each site attended 6 monthly workshop sessions throughout the year.

PARENT-CHILD LITERACY ENGAGEMENT



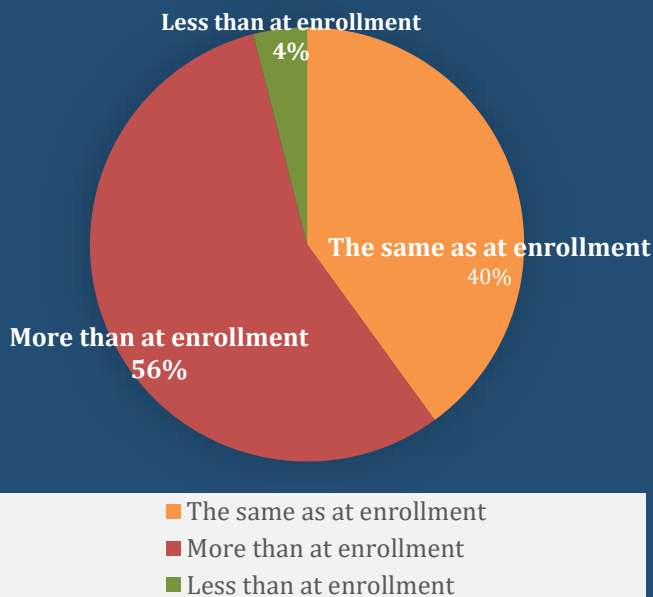
■ What type of print do you interact with most often? Fall

■ What type of print do you interact with most often? Spring

CUI made intentional effort to make families aware of fun ways to engage young children in literacy activities. Survey results from the same set of parents in late Fall and Spring show how parent-child engagement with environmental print increased from Fall to Spring.

CUI's consistent effort to educate parents on the importance of reading with their children: A result of surveys from the same set of parents in Fall and Spring shows that 56% of our families are engaged in reading more now than they were at the time of enrollment.

FAMILY ENGAGEMENT WITH PRINT



Program Goal-3

Program Goal 3 - CUI will incorporate wellness components (physical, emotional, spiritual and financial) into all our programming (weaving them in) taking into consideration cultural differences, individual preferences and attitudes about health and wellness activity levels and diversity.



Teachers kick off the **Teacher Appreciation Week** with Zumba Class



Progress: After the MAWOW grant CUI continued to support Wellness Programs under **CUfit**. CUI has a dedicated committee that meets at least quarterly and hosts wellness activities and monthly challenges and newsletters. Wellness is well adapted, shared and promoted via social media tag **#cufitinc**. CUI is at the beginning of designing wellness programs for families to participate in. This year soccer clinics and walking groups were established that families participated in.



CUI staff participating in wellness activities during **All-Staff Professional Development**



Program Goal-4

CUI will strive to provide facilities that are modern, functional, accessible and reliable to allow staff to deliver high quality programming to families and communities.



New Infant Classroom



New Preschool Classroom



Progress: CUI completed an expansion at Woburn Creative Start adding 2 new classrooms, an infant room, an indoor gross motor space as well as increased space for meeting with families.

An expansion also took place at Waltham Creative Start which included 2 new classrooms; one for toddlers and one for young preschoolers, an office space as well as a multipurpose room.



Preschool Classroom



New Toddler Classroom



Next Steps: CUI's central offices will be moving this summer to Lexington, MA. CUI is looking to open new classroom space in Lexington in September 2020.

CUI's Newton lease will expire in July 2020. We are looking to either renovate or find new first floor space that is modern, functional and accessible that allows for high quality programming in Newton and the surrounding communities.

Communities United, Inc.
Central Office

Relocating in Lexington
August 2019

4 Militia Drive, Suite 1
Lexington, MA 02421

BOARD OF DIRECTORS

Chairman, Harry Carey
Treasurer, Maa-Ablah Apo
Clerk, Helene Forte
Matthew St. Germaine
Elizabeth Ching
Molly De John
Janet Fogel
Jack Myers

ADVISORY COMMITTEE

Dr. Gretchen Bravacos
John Caldwell
Sara Kahana
Amy Mc Callen

POLICY COUNCIL MEMBERS

Chairwoman, Enid Landreth
Fernanda Velasquez
Nicanora Teodolino
Grigory Hakimov
Karen Harkins
Chuurly Gomez
Rina Shrestha
Diana Bonia

SENIOR LEADERSHIP TEAM

Executive Director, Terri Natale
Head Start & Early Head Start Director, Julie Gillcrist
Director of Early Childhood Education, Sylvia Dandrata
Director of Family & Community Engagement, Kimberly Baldasaro
Director of Enrollment, Megan Sharkey
Accounting Manager, John Soehle



Ensuring the Success of the Child, Empowering the Family, and Strengthening the Community.



Communities United, Inc.

Creative Start Children's Centers

50th Anniversary Celebration

Ensuring the Success of the Child, Empowering the Family, and Strengthening the Community.

February 1970 – February 2020



We cordially invite you to join us!

Event Location

Grace Chapel, Lexington

Adult Learning Center

2 Militia Dr, Lexington, MA 02421

Date

February 8, 2020

Time

10:00 am—2:00 pm

DETAILS
COMING SOON!



COMMUNITIES UNITED, INC.

108 WATER ST. STE 2D

WATERTOWN, MA 02472

COMMUNITIESUNITEDINC.ORG

617.744.6076